

# MENSTRUAL CYCLE

[DEPTH OF BIOLOGY]

- Reproductive cycle in female primates { Monkeys, Apes, Humans }
- **MENARCHE**- first M.C./ ovulation
  - at age of 12-13 (puberty)
- **MENOPAUSE** - M.C. Stops
  - at age of 45-50

[DEPTH OF BIOLOGY]



- Occurs in every 28-29 days
  - Ovulation (at 14<sup>th</sup> day)- LH & FSH at peak
- Egg released from the ovary

## MENSTRUAL FLOW- 3 to 5 days

[DEPTH OF BIOLOGY]

- WHY M.C. OCCURS?
- Uterus gets thick for implantation.....but expectations hurt.....!!!!!!!!!!!!!!!!!!!!
- **Endometrium lining and blood vessel burst**

[DEPTH OF BIOLOGY]



**PROPER/REGULAR MC**

**No Problem**



**CONGRATULATIONS**

- Fertilization
- Pregnancy

[DEPTH OF BIOLOGY]

**IRREGULAR MC**

[DEPTH OF BIOLOGY]

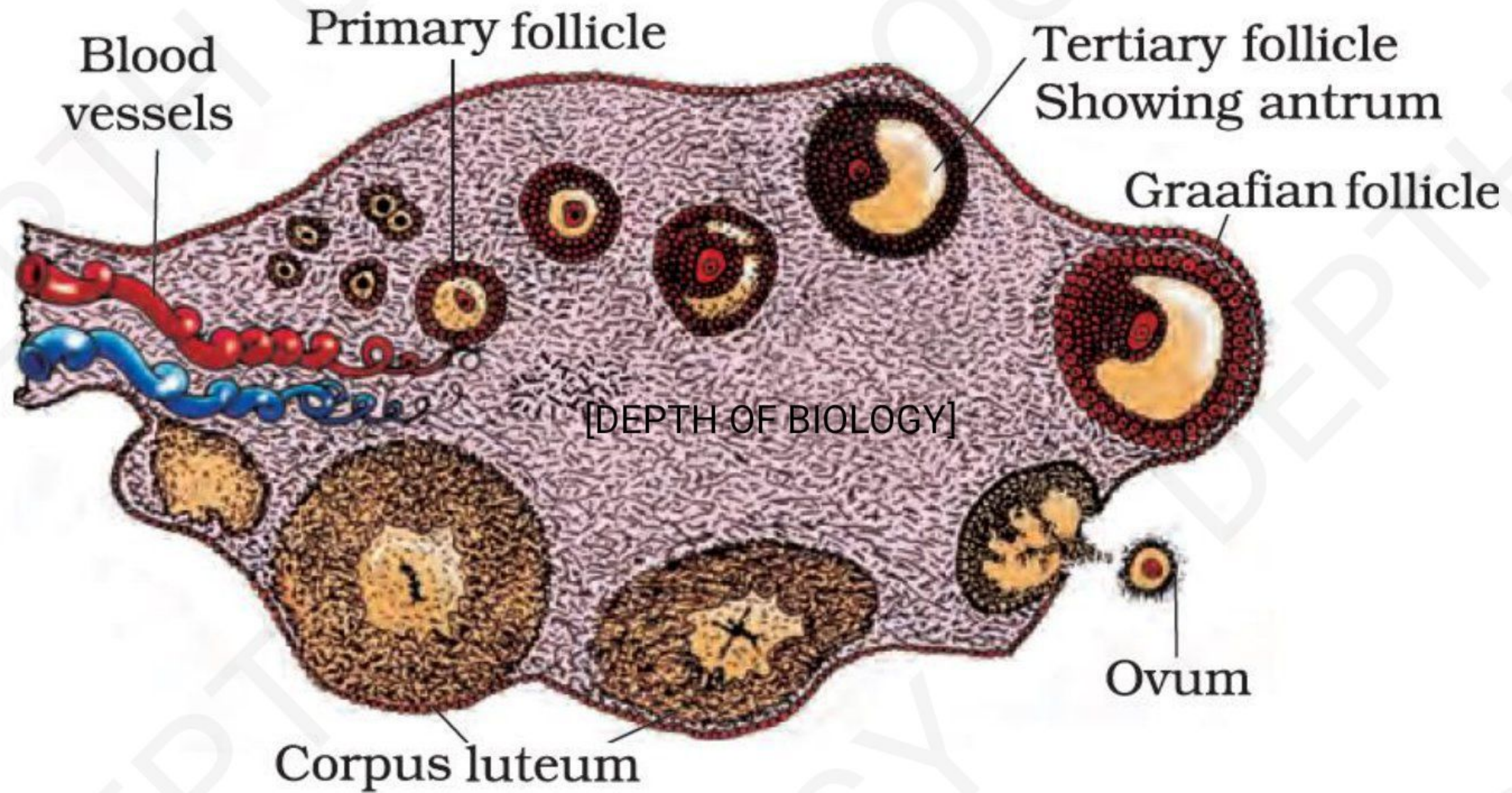
May be due to  
poor health  
issues,  
Hormonal  
imbalance.  
stress

[DEPTH OF BIOLOGY]



# FOLLICULAR DEVELOPMENT

[DEPTH OF BIOLOGY]





PRIMARY FOLLICLE

[DEPTH OF BIOLOGY]



SECONDARY FOLLICLE



[DEPTH OF BIOLOGY]

TERTIARY/ GRAFFIAN FOLLICLE

(ANTRUM CAVITY : antrum fluid)

Puts pressure on the secondary oocyte

[DEPTH OF BIOLOGY]

OOCYTE released & caught by fimbriae

*Outer layer-*

*Corona radiata*

*Inner layer- Zona  
pellucida*



# OVARY & UTERUS CHANGES

[DEPTH OF BIOLOGY]

- Because of Change in level of pituitary & ovarian hormones
- LH & FSH increase gradually during follicular phase [DEPTH OF BIOLOGY]
- Middle of M.C. (14<sup>th</sup> day)- LH & FSH attain peak

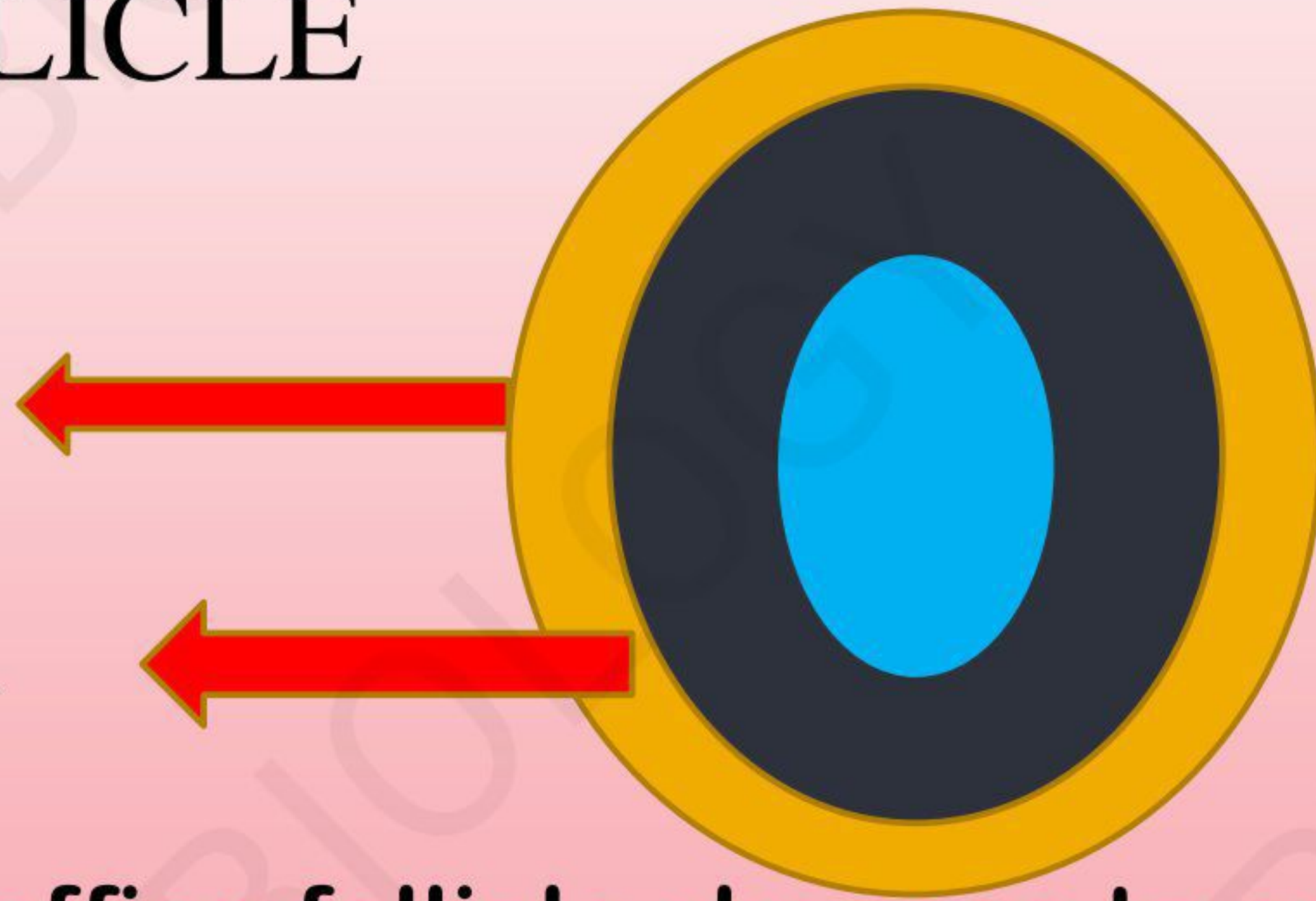
[DEPTH OF BIOLOGY]



# SECONDARY FOLLICLE

**THECA EXTERNA-**  
Produce estrogen

**THECA INTERNA**



[DEPTH OF BIOLOGY]

[DEPTH OF BIOLOGY]

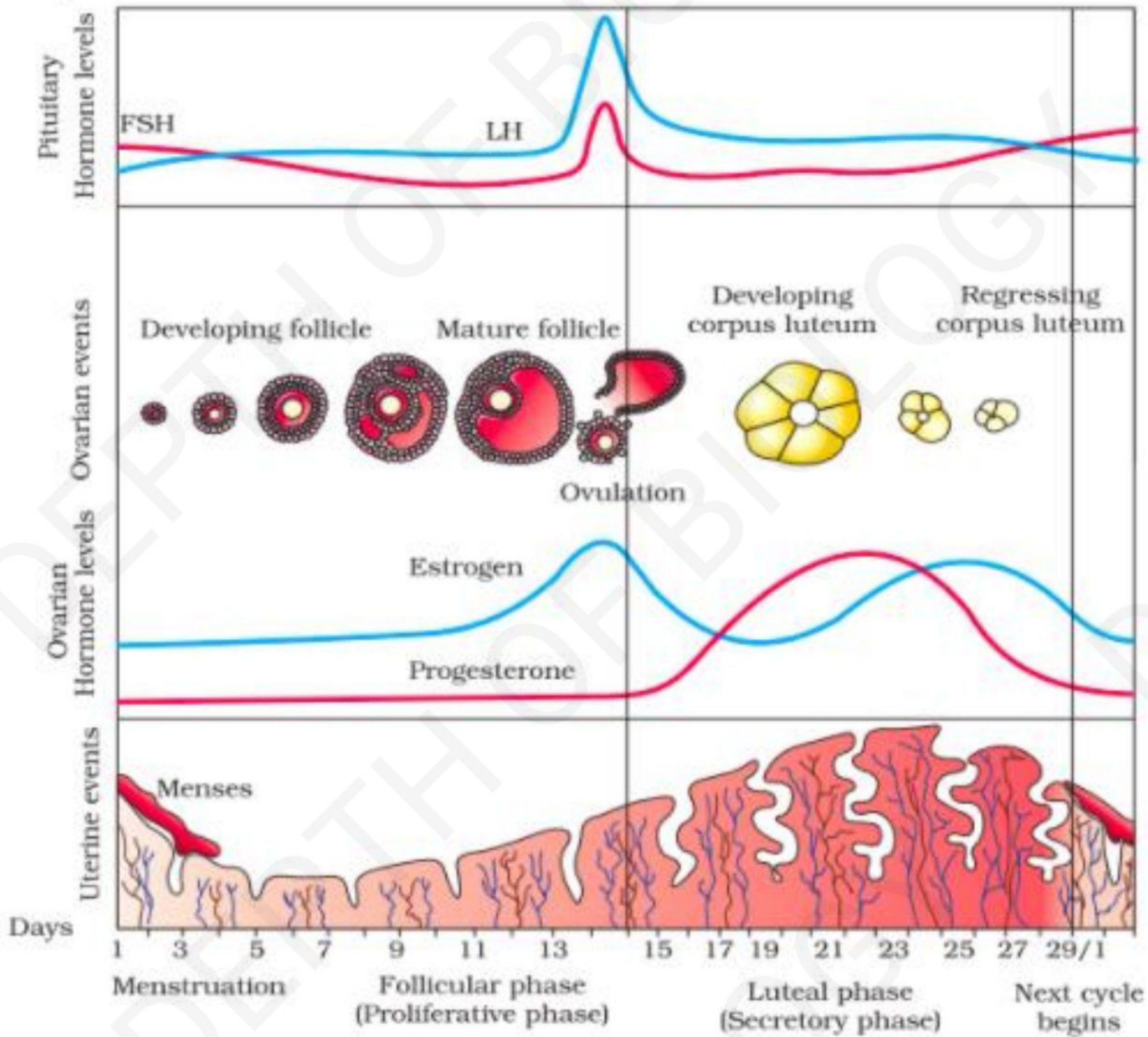
**After releasing egg ,Graffian follicle changes to corpus luteum**

**& releases progesterone**

**For maintaining endometrium of uterus**

**CORPUS LUTEUM DEGENERATES IF NO FERTILIZATION OCCURS** [DEPTH OF BIOLOGY]





# [DEPTH OF BIOLOGY]